

Rhode Island Ocean Special Area Management Plan (SAMP)


71°50'W 71°40'W 71°30'W 71°20'W 71°10'W 71°0'W 70°50'W

Map Key

 OceanSAMP Study Area

 State Waters

Trawl Sample Locations

 DEM


 GSO


 NEAMAP

 NMFS


 Depth Contours (feet)


Water Depth in Feet

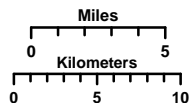
 0 - 30

 30 - 60

 60 - 90

 90 - 120

 > 120



Coordinate System:

Projection: RI Stateplane

Units: Feet

FIPS Zone: 3800

Datum: NAD83

Map Base Data:

State Borders: RIGIS; MAGIS; CTGIS

SAMP Study Area: RI SAMP Database

State Waters: MMS SLA Boundary

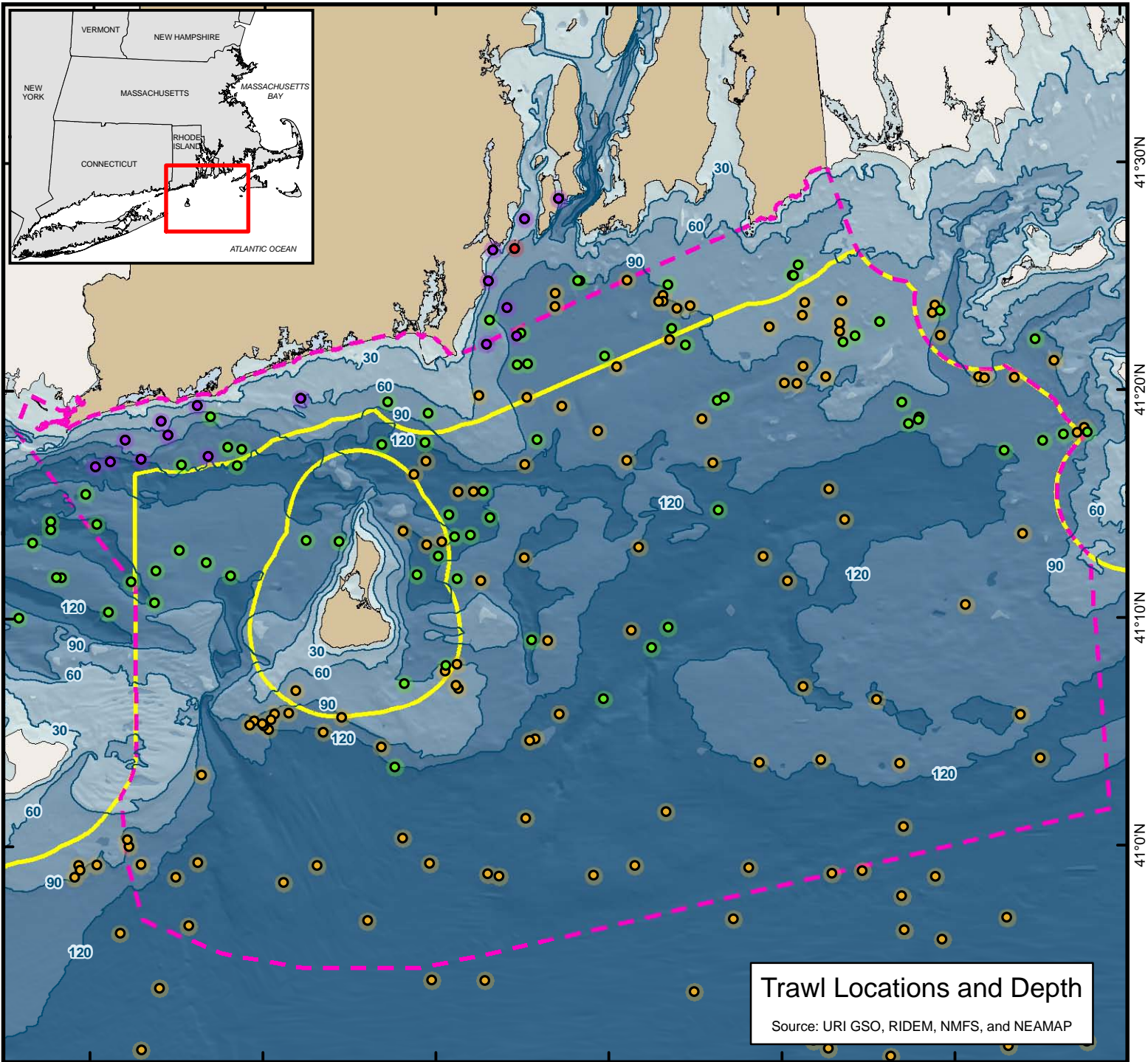
Bathymetry: Interpolated from NOS Soundings

For Project Background Information:

<http://seagrant.gso.uri.edu/oceansamp>

For Project Map and Data Products:

http://www.narrbay.org/d_projects/oceansamp



41°30'N

41°20'N

41°10'N

41°0'N

Trawl Locations and Depth
Source: URI GSO, RIDEM, NMFS, and NEAMAP